

Autopro[®]

Blu-Ray Player

INSTRUCTION MANUAL



BD1208

Before attempting to connect or operate this product, please read the instructions completely.

Contents

Safety Warnings.	2
Features.	3
Packaging Contents.	3
Start up Guide.	3
Supported Disks.	4
Blu-Ray Player Overview.	5
Installation.	5
The Remote control.	8
Setting up the Remote Control.	9
Home Menu.	10
General Setting.	10
Display Setting.	13
Audio Setting.	14
System Information.	15
OSC Play Setting Menu.	16
Maintaining.	17
Handling Discs.	17
FAQ(Frequently Asked Questions).	18
Trouble Shooting.	19
Reference.	22

Reference

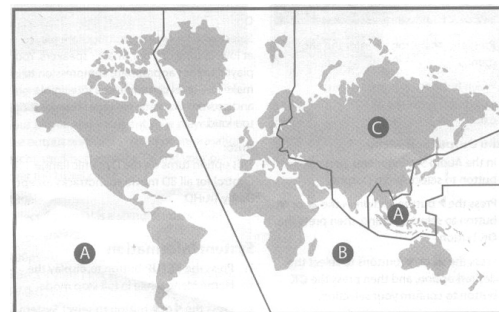
To get the optimum use of your Blu-Ray player, please read this section completely.

Blu-Ray Region Codes

This player is preset to a region code at the factory depending on where the player is sold.

Blu-Ray Discs(BDs)are also coded by region. These region codes must match in order for the disc to play. if the region codes don't match, the disc won't play.

The letter inside the globe refers to region of the world. This player has been designed to play back Blu-Ray Disc(BD)video encoded for region "A". you cannot play back Blu-Ray discs that are encoded for other regions.



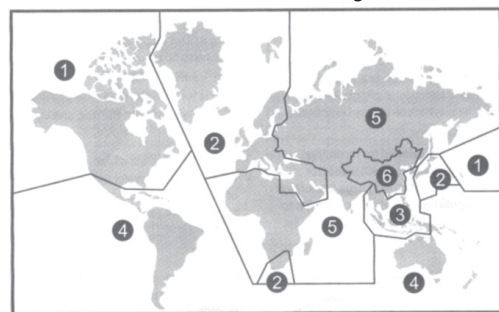
Region A-USA, Canada, Central America (including Mexico), South America, Japan, Taiwan, North Korea, South Korea, Hong Kong, and South East Asia

Region B-Europe, Greenland, Middle East, Africa, Australia, and New Zealand

Region C-India, Nepal, Mainland China, Pakistan, Central Asia, and South Asia

DVD Region Codes

The letter inside the globe refers to region of the world. This player has been designed to play back DVD video encoded for region "1". you cannot play back DVDs that are encoded for other regions.



Region 1-USA, Canada

Region 2-Japan, Europe, South Africa, Middle East, Greenland

Region 3-Korea, Taiwan, Hong Kong, Parts of South East Asia

Region 4-Australia, New Zealand, Latin America (including Mexico)

Region 5-Eastern Europe, Russia, India, Africa

Region 6-China

Problem: When playing a BD-Live disc, the screen is black

Solution: Erase BD Storage.

Make sure that your Internet connection is working.

Make sure that the Internet cable is connected securely and correctly

to your player and the Internet jack. Some discs require an Internet connection to play.

BD-Live and USB connections:

Problem: Cannot connect access BD-Live content

Solution: Make sure that the BD-Live Disc you are using is a legal copy.

Make sure that the USB flash drive is connected correctly and securely.

Make sure that the network connection is working.

Problem: After connecting to the Internet, cannot download a file

Solution: Erase BD Storage.

Make sure that the Internet connection is working.

Try a different USB flash drive.

Problem: File was downloaded, but playback from file pauses

Solution: Make sure that the USB flash drive is a USB 2.0 device. Using a USB 1.1 device may cause pausing.

Try a different USB flash drive.

Internet and USB connections:

Problem: Cannot perform automatic setup with my wireless router

Solution: Only WPS automatic setup is supported by the player.

Other playback problems:

Problem: Audio and video pause momentarily

Solution: This happens when your player is changing chapters in a playlist.

When playing a disc that is recorded on both layers, audio and video may pause when your player is changing layers.

Problem: Blu-ray Disc or DVD does not play

Solution: Make sure that the disc has the correct region code.

Check the rating on the disc. You may have set parental controls to block that rating.

Some Blu-ray discs will only play over an HDMI connection.

Problem: Picture-in-Picture (PIP) does not work on a Blu-ray Disc

Solution: Make sure that the disc supports PIP mode.

Problem: No subtitles

Solution: Turn on subtitles.

Make sure that the disc was recorded with subtitles. If the disc has subtitles, a subtitle option should appear on the disc's menu.

Problem: Cannot change the viewing angle

Solution: Some discs are not recorded with multiple viewing angles.

Check the documentation that came with the disc.

Not all scenes on a disc have multiple viewing angles. Check the documentation that came with the disc.



To reduce the risk of fire or electric shock, do not expose this product to water, rain or moisture. To prevent the risk of electric shock, do not remove the cover or back of this product.

Warning

Your player employs a laser system. Use of controls, adjustments, or the performance of procedures other than those specified may result in hazardous radiation exposure.



Visible laser radiation is present when open and interlocks defeated. **Do not stare into the beam.**

- Before operating your Blu-Ray Player please carefully read the instruction manual.
- This product is not intended to be used by young children unless adequately supervised by a responsible adult.
- This product is intended for house hold use only. Commercial or industrial use will void the warranty.
- Turn off your Blu-Ray Player before storing or attempting to clean it.
- Do not expose your Blu-Ray Player to wet or humid environments
- Do not expose your Blu-Ray Player to heat sources such as heaters or radiators.
- Do not expose your Blu-Ray Player to naked flames such as candles
- Do not cover the ventilation slots.
- Only clean your Blu-Ray Player with a damp cotton cloth. Do not use cleaning agents or solvents.
- Do not attempt to service your Blu-Ray Player, there are no user serviceable parts contained inside.

Features

- Full high-definition video playback at up to 1080p resolution for an amazing viewing experience.
- Up-conversion of standard definition DVDs for enhanced picture quality at up to 1080p over a HDMI connection.
- Rich multi-channel surrounds sound.
- Simple installation using a single HDMI cable (cable not included)
- Multiple outputs for connecting your home theater system or amplifier.
- Picture in Picture functionality that lets you display primary and secondary video at the same time. (When supported by the Blu-ray Disc)
- Pop-up menu display without interrupting playback (When supported by the Blu-ray Disc)
- HDMI 1080p/60Hz output (Blu-ray Discs only) that provides smooth playback of video with a frame rate of up to 60 frames per second (TV must be connected with a HDMI cable and be compatible with 1080p 60Hz)

Package Contents

Before installing your new Blu-Ray Player please ensure that you have received all the following items:

- Blu-Ray Player
- Remote Control
- AV cable
- User Manual

Start up guide

Before you set up your new Blu-Ray Player please position it on a flat stable surface within reach of your TV connection. To connect your Blu-Ray Player please follow the below instructions:

1. Connect your Blu-Ray Player to your TV. You have two options to do this. You can use HDMI for the best possible connection, or composite. When connecting your Blu-Ray Player with composite please ensure that you match the coloured ends on both the Blu-Ray Player and your TV.
2. Plug the Blu-Ray Player into power and turn it on.
3. Insert battery into the remote.
4. Change the input on your TV to the corresponding input you used in step 2. e.g. AV1 or HDMI1.

startup is slow. This is not a defect.

If your player is connected to the TV with an HDMI cable, startup is slow. This is not a defect.

Problem: When reading a disc, the disc tray opens

Solution: Make sure that the disc is not dirty.

The disc may be incompatible with your player. Try another disc.

Reset your player.

Problem: Audio or video pause during playback

Solution: Make sure that the disc is not dirty.

Reset your player.

Problem: The player is on and the logo and menu appear, but there is no image from the disc.

Solution: Make sure that the disc is not dirty.

Reset your player.

Problem: The player freezes when reading a disc.

Solution: Reset your player. When you see loading on the screen, press (open/close) to open the disc tray and remove the disc. Clean the disc and try the disc again.

If your player freezes again, the disc may contain some content that is not compatible with your player. Do not try playing the disc with your player.

TV Screen and Video:

Problem: Video does not appear on the TV screen or the picture is distorted

Solution: Make sure that the TV is connected to the correct jacks on the back of your player.

Make sure that the TV is set to the correct video input source.

The TV may be in screen saver mode. Check the documentation that came with the TV for instructions about **waking** your TV.

Reset your player.

Problem: Video is not output in high definition

Solution: High definition video cannot be output through the VIDEO OUT jack.

You must connect the TV to your player using the COMPONENT OUT jacks or HDMI jack.

Make sure that the correct HDMI or component video resolution has been selected in the Setup menu. Depending on the Blu-ray Disc, output from the COMPONENT VIDEO OUT jacks may be restricted to 480p.

Problem: The 4:3 aspect ratio picture expands left and right or the picture size is incorrect.

Solution: Use the TV to change the aspect ratio. See the documentation that came with the TV. When using a component video cable, set TV Aspect to 4:3 Pan & Scan.

Problem: There is no apparent change in the picture quality when the picture settings are changed in the Setup menu

Solution: Depending on the video type, changes may not be apparent.

DVD-R DL (DVD Video format and DVD Video Recording format), DVD+R, DVD+RW, and DVD+R DL, Audio CD/CD-R/RW discs which have been recorded in one of the following standards: CD-DA and stillpictures (JPEG). Close the session after recording.

Note: Your player can not write to discs.

Trouble shooting

Check the following information for the possible cause and solution for a problem before contacting the nearest service center or dealer for repairs.

The following do not indicate a problem with your player:

Regular disc rotation sounds.

Image disturbance during search.

Power:

Problem: No power

Solution: Make sure that the power cord is plugged into a power outlet and that the outlet is supplying power.

Problem: The player switches to standby mode

Solution: After a period of inactivity, your player switches to standby mode automatically.

This is a power saving feature.

If your player switches to standby mode unexpectedly, a safety device may have been activated. Press STANDBY/ON on the front of your player.

Operation:

Problem: Remote control does not work

Solution: Make sure that you are pointing the remote control at the remote control sensor on the front of your player.

Make sure that there are no obstructions between the remote control and the remote control sensor on the front of your player. Make sure that there is no colored glass between the remote control and the remote control sensor on the front of your player. Colored glass, such as the glass door of an entertainment center, can interfere with signal reception.

Make sure that the remote control sensor is not exposed to direct sunlight or bright light. These can interfere with signal reception. Replace the batteries.

Problem: Some or all functions do not work

Solution: Some functions are not allowed by the disc, for example, fast-forwarding through the warning information at the beginning of the disc.

Condensation may have formed inside your player. Turn off your player and wait one to two hours for the condensation to evaporate.

Problem: Playback fails to start or starts then stops even when play/pause is pressed

Solution: Make sure that the disc is inserted face up in the disc tray.

Make sure that the disc is not dirty

The disc may be blank or incompatible with your player. Try another disc.

Problem: Start up is slow and audio and video output takes a long time

Solution: If power has been interrupted or the power cord has just been connected,

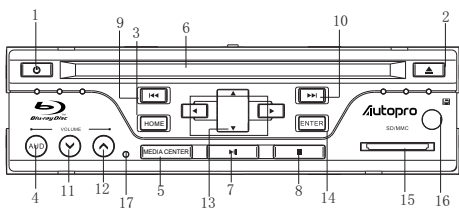
Supported Discs

Disc type	Disc type
Blu-ray Disc	CD-R
DVD-video (DVD-ROM)	Audio CDs (CDDA)
DVD-RAM	CD-RW
DVD-RW	MP3
DVD+RW	WMA
DVD-R	JPEG
DVD+R	MPEG4

- Writeable DVD discs (DVD-RAM, DVD-RW, DVD-R) must be finalized, VR-mode only.
- Your player supports discs that are compatible with DVD-RAM Standard Version 2.0.
- Playback may not work for some types of discs, or when specific operations, such as angle change and aspect ratio adjustment, are being performed. Information about the disc is written in detail on the box.
- Do not allow the disc to become dirty or scratched. Fingerprints, dirt, dust, scratches, or deposits of cigarette smoke on the recording surface may make it impossible to use the disc for playback.
- Windows Media Audio (WMA) files must be written to the disc with a .wma file extension in order to be recognized and played back correctly.
- JPEG picture files must be written to the disc with a .jpeg or .jpg file extension in order to be recognized and played back correctly.

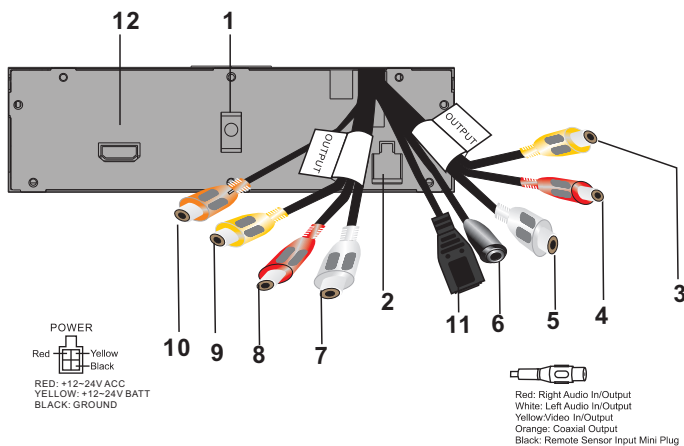
Blu-Ray Player Overview

Front Panel



- | | |
|-----------------|----------------------------|
| 1. POWER | 9. PREVIOUS |
| 2. EJECT | 10. NEXT |
| 3. HOME | 11. VOLUME- |
| 4. AUD | 12. VOLUME+ |
| 5. MEDIA CENTER | 13. ◀ ▶ ▶ ▶ Cursor buttons |
| 6. DISC SLOT | 14. ENTER |
| 7. PLAY/PAUSE | 15. SD |
| 8. STOP | 16. IR |

Rear Panel



POWER
 Red - Yellow
 Black - Black
 RED: +12-24V ACC
 YELLOW: +12-24V BATT
 BLACK: GROUND

Red: Right Audio In/Output
 White: Left Audio In/Output
 Yellow/Video In/Output
 Orange: Coaxial Output
 Black: Remote Sensor Input Mini Plug

- | | |
|---------------------------------|------------------------------|
| 1. DIN INSTALLATION HOLE | 7. AUDIO-L OUT (WHITE) |
| 2. POWER HARNESS INPUT | 8. AUDIO-R OUT (RED) |
| 3. VIDEO OUT (YELLOW) | 9. VIDEO OUT (YELLOW) |
| 4. AUDIO-R OUT (RED) | 10. DIGITAL COAXIAL (ORANGE) |
| 5. AUDIO-L OUT (WHITE) | 11. USB INPUT |
| 6. EXTERNAL REMOTE SENSOR INPUT | 12. HDMI |

Cleaning discs

Before playback, wipe the disc outwards from the center (not in a circle) with a clean cloth.



FAQ (frequently asked questions)

Q: What do I need to play multi-channel surround sound

A: Connect the appropriate amplifier/receiver to the HDMI jack, the DIGITAL AUDIO OUT jack (OPTICAL or COAXIAL).

Q: Can I connect headphones to my player?

A: You cannot directly connect headphones to your player. Connect headphones to the connected TV or sound system.

Q: My television has COMPOSITE VIDEO-IN, COMPONENT (YUV) IN and HDMI IN jacks. Which should I use?

A: HDMI provides the best video and audio. Component video provides better video than composite video, but not as good as HDMI video. Composite video provides good video.

Q: Can I play Blu-ray Discs and DVDs bought in another country?

A: You can play them if the video standard is NTSC. However, you cannot play: Blu-ray Disc Don't include region code A. DVD disc don't include region code 1 or ALL. Region codes are on the discs or disc packaging.

Q: Can I play Blu-ray Discs and DVDs that do not have a region code?

A: No. Region codes indicate that a disc conforms to industry standards. You cannot play a disc that does not have a region code.

Q: What types of discs will my player play?

A: Your player can play: Blu-ray Discs, DVD-Video, DVD-RAM (DVD Video Recording format, AVCHD format and JPEG format), DVD-R/RW (DVD Video format and DVD Video Recording format),

Maintaining

General guidelines

The top and back panels of your player may become hot after a long period of use.

This is not a malfunction.

When you are not using your player, make sure that you remove the disc and put your player into standby mode.

If you do not use your player for a long period of time, it may not function correctly.

Turn on and use your player occasionally.

Do not place objects on the disc tray.

Do not locate your player:

Near heating devices or in an enclosed vehicle

In an area with a temperature over 104° F (40° C) or humidity over 90%

Operating Temperature: -10°C~55°C

Storage Temperature: -20°C~70°C

Dirty places

In an area with direct exposure to sunlight

Do not install this equipment in a confined space such as a book case or similar unit.

The ventilation should not be impeded by covering the ventilation openings with items such as newspapers, table-cloths, or curtains.

Make sure that you leave a minimum of 4 inches (10 cm) around your player for sufficient ventilation.

Electrical disturbance

If you place your player next to a radio, TV, or VCR, the image may be poor and the sound may be distorted. In this case, move your player away from the radio, TV, or VCR.

Condensation

Condensation may form inside your player when:

You move your player from a cold area to a warm area

You use it in a cold room where you have just turned on a heater

Air conditioning is blowing directly on your player

Your player is in a damp place

If condensation forms inside your player, your player will not work correctly. Turn on your player, remove the disc and leave the tray open, then leave your player on for two to three hours.

To minimize condensation problems, keep the power cord connected to a power outlet.

Storing discs

Do not store discs in a place that is exposed to direct sunlight or heat.

Do not store discs in a place that is exposed to moisture and dust, such as a throom or near a humidifier. Store discs vertically in their cases. Stacking discs or placing objects on discs when not in their cases may cause warping.

Handling discs

To keep a disc clean, do not touch the play side (non-label side) of the disc.

Do not attach paper or tape to the disc.

Installation

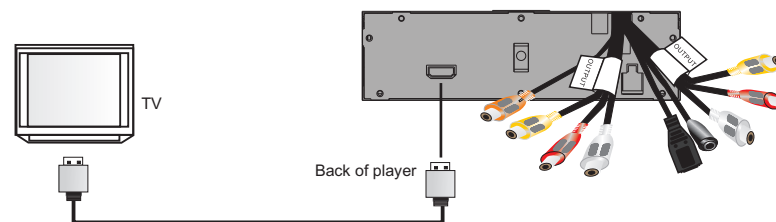
Before you connect your Blu-Ray Player to your TV please ensure that it is set up on a flat and stable surface.

Now that your Blu-Ray Player is in position, connect it to your TV and any other peripheral devices. Please refer to the below diagram and your TV's user manual for cable installation instructions.

Connecting a TV using an HDMI cable (best)

To connect a TV using an HDMI cable:

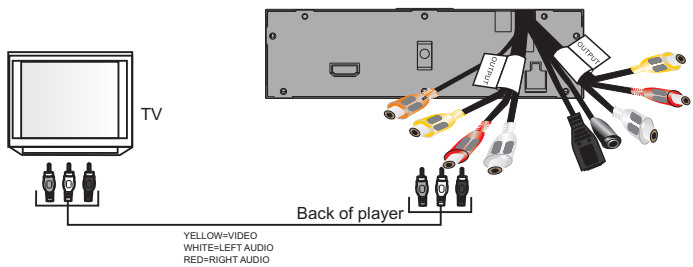
Connect a HDMI cable to the HDMI jack on the back of your player and to the HDMI IN jack on the TV.



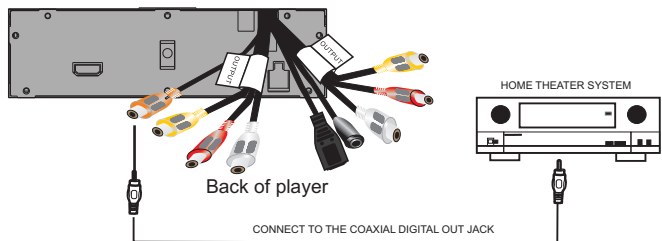
Connecting a TV using an A/V cable (good)

To connect a TV using an AV cable:

Connect an A/V cable to the VIDEO OUT and AUDIO OUT L/R jacks on the back of the Blu-Ray Player and to the VIDEO IN and AUDIO IN L/R jack on your TV. Jacks and cable connectors are usually color-coded. Make sure that you match the colors.



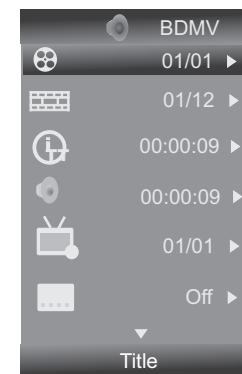
Connect your Blu-Ray Player audio to a digital amplifier or home theater system:
 Connect a digital coaxial cable from the Coaxial Digital Out jack on the back of your Blu-Ray Player to the Coaxial Digital In jack on the receiver.



OSC Play setting Menu

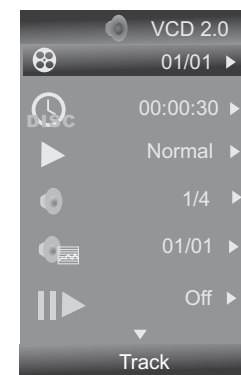
BD Disc Type

- Title
- Chapter
- Time
- Audio
- Angle
- Subtitle
- Subtitle Style -- BD
- Second Video -- BD
- Second Audio -- BD
- Bitrate
- Still Off
- Instant Search



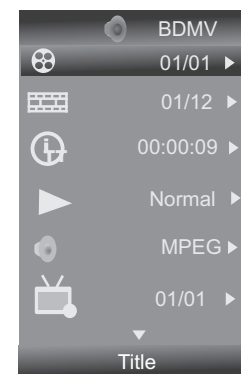
Disc Type DVD

- Title
- Chapter
- Time
- Audio
- Angle
- Subtitle
- Bitrate
- Still Off
- Instant Search
- Instant Replay



Disc Type VCD

1. Track
2. Time
3. Mode
4. Audio
5. Bitrate
6. Instant Search
7. Instant Replay



Speaker Setting

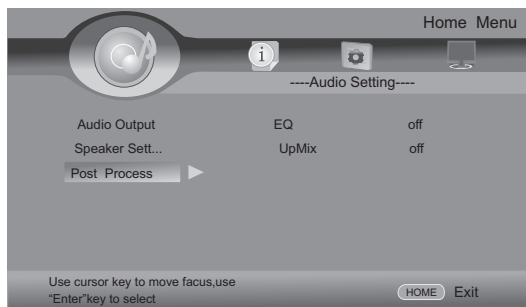
Test Tone - To test the Speaker



Post Process

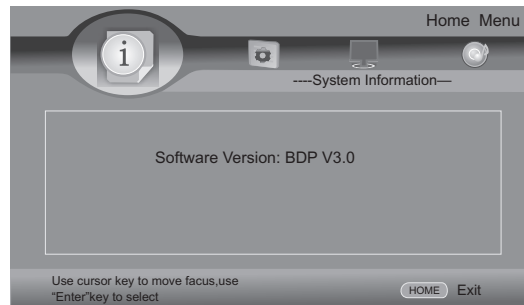
EQ - Off/Rock/Pop/Live/Dance/Classical/Soft

UpMix - Off/PL2/NEO6



System Information

Display Software Version.



The Remote Control



	: Start / Standby
	: Open / Close
No. Key:	Input numbers Key 0, 1, 2...9
	: Audio Mute Key
Display:	Display files Information Key
VOL.:	Press to Volume Up/Down
GOTO:	Select playback
CLR:	Press to clear an input error
	: Fast Return / Fast Forward
	: Next Key / Previous Key s
	: Stop Key
	: Press to pause / play the movie
SLOW:	Slow Playback Key
OSC:	Press to open Control Menu
HOME:	Press to open HOME Menu
	: Up/Down/Left/Right move Key s
ENTER:	Enter Key
MEDIA CENTER:	Press to Media Center
RETURN:	Return to the Previous Menu
PROG.:	Program Play
B.MARK:	Display bookmark menu
ZOOM:	Display Zoom in/out Key
AUDIO:	Change Audio channel Key
SUBT:	Change Subtitle Key
MENU:	Press to open a menu for disc
TITLE:	Press to open POP Up/ti tle menu for disc
A-B / Repeat:	Repeat A-B, Repeat Chapter/Title/All/Off
2nd AUDIO:	In PIP mode, select the second audio on/off
ANGLE:	Change Video Angle (Requires disc support)
PIP:	Picture-in-picture mode on or off
RESOLUTION:	Change the Output Resolution
RANDOM:	Random playback

NOTE:

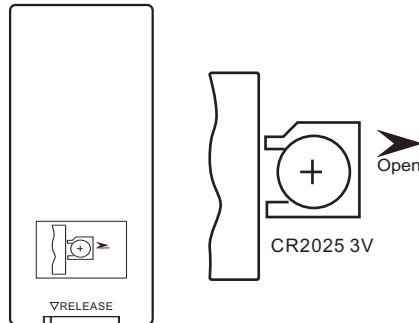
Colour buttons (RED/GREEN/YELLOW/BLUE): Short cut keys for selecting items on some BD' s menus (can also be used for BD' s Java interactive operations).

Setting up the Remote Control

Setting up your player
Installing remote control batteries

Inserting the Batteries

1. Open the battery compartment cover.
2. Insert the new batteries. Make sure that the positive and negative terminals of the battery correct.

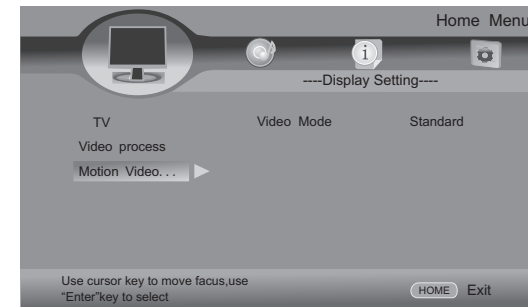


3. Close the cover
Battery: One button cell lithium battery.

Using the Remote Control Point the remote control towards the player front face IR mark (remote control signal receiver), or the remote extender. Operation angle: About ± 30 degree in each the direction of the front of the IR mark or remote extender.

Please Note

- Make sure that you insert the batteries correctly.
- Do not heat, open, or short-circuit batteries.
- Do not throw batteries into a fire.
- Do not mix different types of batteries or mix old and new batteries.
- Do not try to recharge non-rechargeable batteries.
- If the remote control does not function correctly or if the operating range becomes reduced, replace the batteries.



Audio Setting

Audio Output

Spdif- Set the Spdif mode

HDMI- Set the HDMI mode

Down_samp - 48K / 96K / 192K

DRC -Set the DRC mode



Display Setting

TV

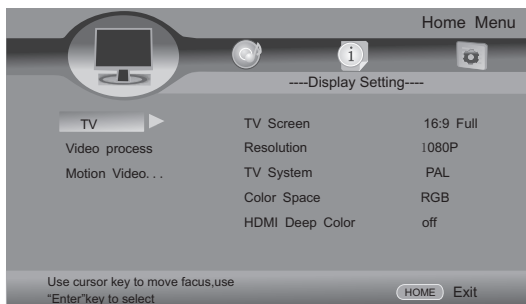
TV Screen: 16:9Full, 16:9 Normal, 4:3 Pan & Scan , 4:3 Letterbox

Resolution: Auto, 480i/576i, 480P/576P, 720P, 1080i/1080P

TV System: NTSC, PAL, Multi

Color Space - RGB/YCbCr/YCbCr422/Full RGB/HDMI Deep Color - 30 bits/ 36bits /

48bits / Off HDMI 1080P 24Hz - On / Off



Video Process,

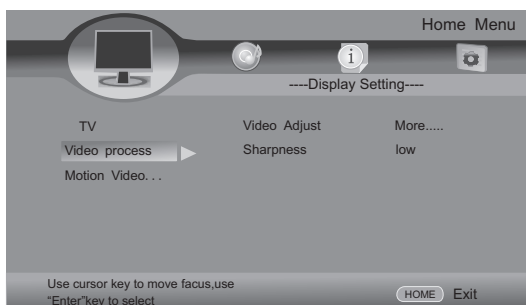
Video Adjust - Brightness/Contrast/Hue

Saturation

Sharpness - High/Middle/Low

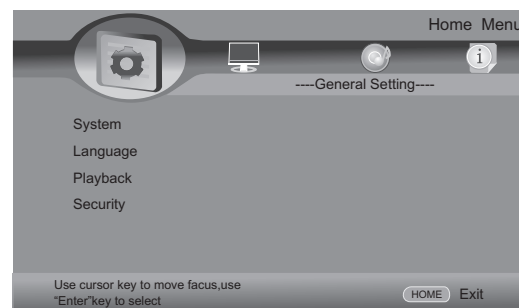
Motion Video Process

Video Mode - Standard/Vivid/Smooth

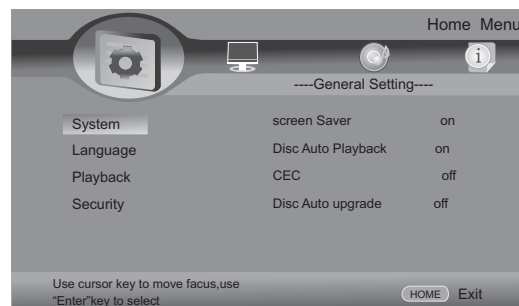


Home Menu

The main menu on your Blu-Ray Player gives you the power to quickly switch between several key features. The Menu will be displayed when you start up the Blu-Ray Player. Press Setup/Home button which on the remote control to open Home Menu.



General Setting



Setup System

Screen Saver - Turn the Screen Saver on and off.

Disc Auto Playback - Set the Disc into the Auto where applicable.

CEC -Turn the CEC on and off.

Disc Auto Upgrade- Turn the Disc Auto Upgrade on and off.

Load Default -Set the default where applicable.

Upgrade -Select the way for upgrade.

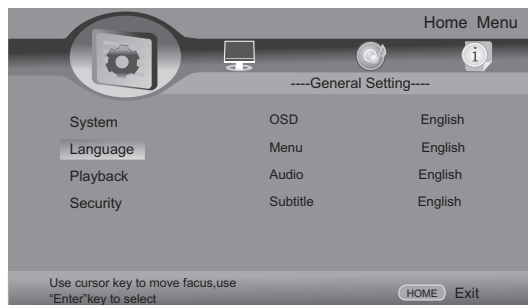
Easy Setup: Welcome Photo
OSD Language
Resolution
Aspect Ratio
Finished Photo

BUDA: BUDA Information.

BUDA Setup - External /On Board(while show insufficient internal memory,please

Change into External and connect USB flash disk.)

Setup Language



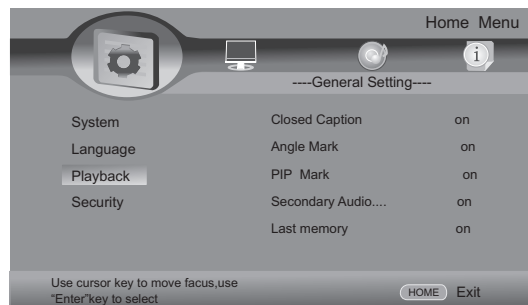
OSD –Set the onscreen display language.

Menu – Set the default Menu language where applicable.

Audio –Set the default Audio language where applicable.

Subtitle –Set the default subtitle language where available.

Playback



Closed Caption – Turn the caption on and off.

Angle Mark –Turn the angle mark on and off.

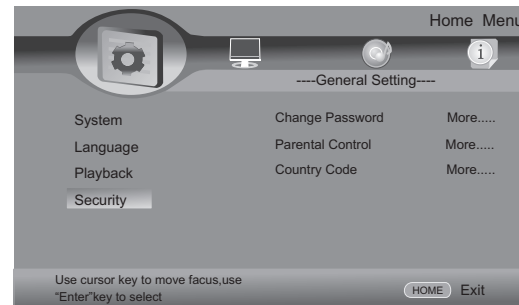
PIP Mark –Turn the PIP mark on and off.

Secondary Audio Mark –Turn the Secondary Audio Mark on and off.

Last Memory –Turn the last memory on and off.

PBC –Turn the PBC on and off.

Security



Change Password – To change the password. (Initial Users Password: 0000)

Parental Control: (Initial Users Password: 0000)

Off – Turn off the parental control

[Kid Safe] – Suitable for all children.

[G] – General audiences.

[PG] – Parental guidance suggested.

[PG-13] – Not suitable for anyone under 13.

[PGR] – Parental guidance recommended.

[R] – Not suitable for anyone under 17 unless supervised by a parent or adult guardian.

[NC-17] – Not suitable for anyone under 17.

[Adult] – All DVDs can be played.